

Wireless Room Thermostat DT92E

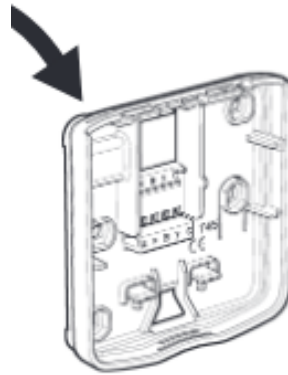
Installing the DT92 Room

The device takes 2x AA batteries.

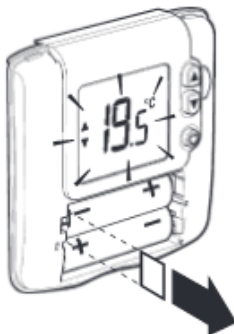
Before mounting DT92 onto the backplate



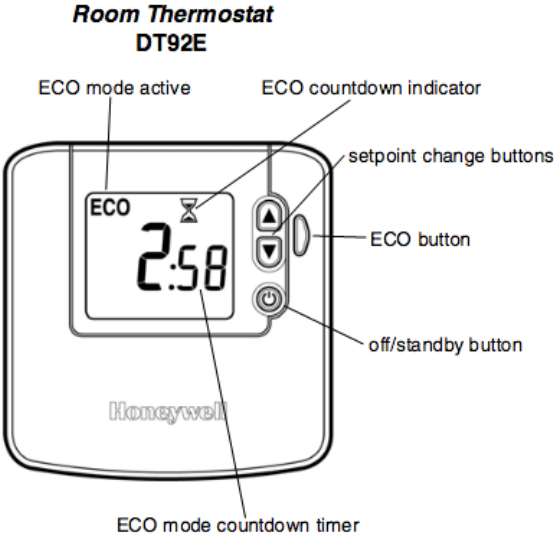
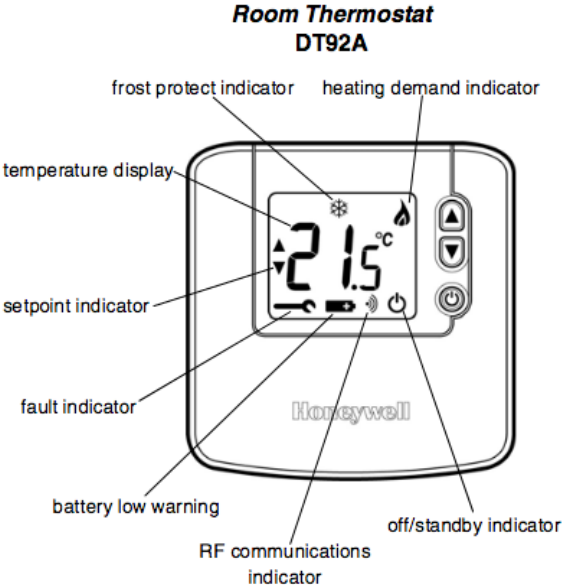
DT92E Room Thermostat
DT92E Termostato de Ambiente
Thermostat d'ambiance sans fil DT92
DT92E Kamerthermostaat
DT92E Raumthermostat
DT92E Termostato Ambiente
DT92E Helyiség termosztát
DT92E Pokojový termostat
Bezprzewodowy termostat
pomieszczeniowy DT92E
DT92E priestorový termostat



DT92E Backplate
DT92E Tapa posterior
Socle mural DT92E
DT92E Muurplaat
DT92E Montageplatte
DT92E Basetta
DT92E Hátlap
DT92E Zadní deska
Pokrywa tylna DT92E
DT92E Montážna podložka

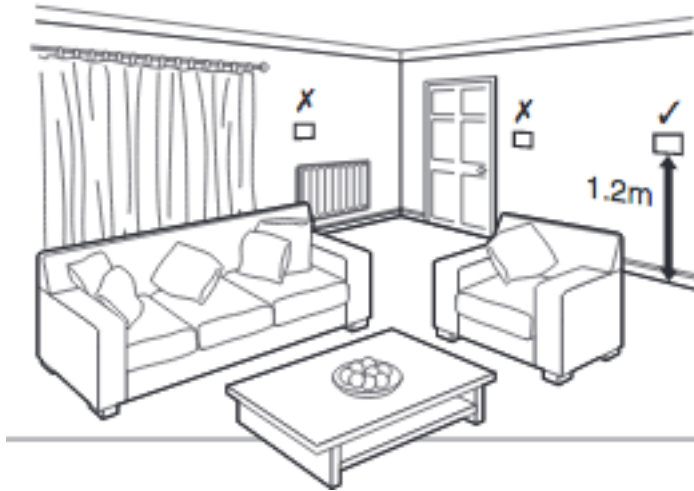


Control Layout

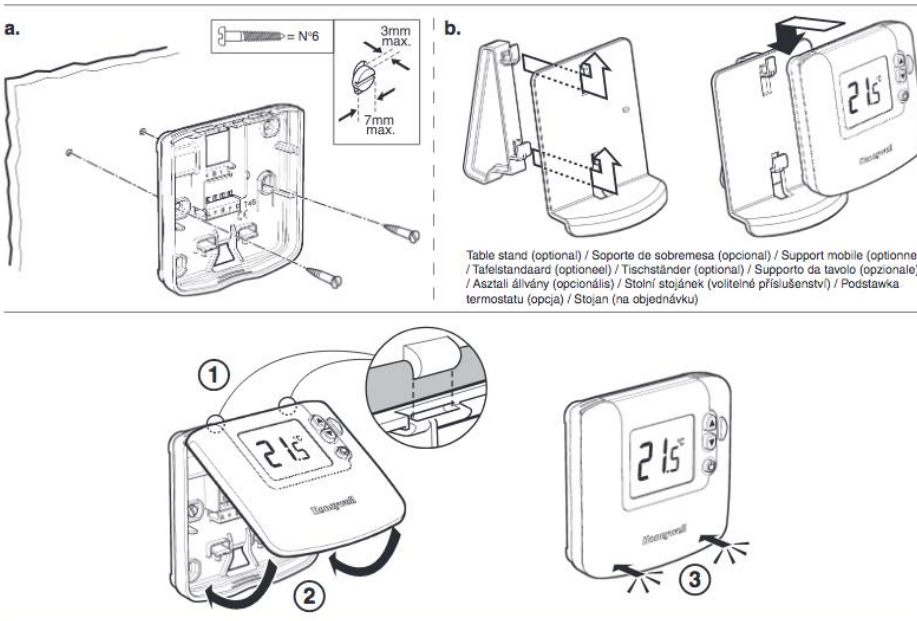


Locating the Room Thermostat

For best performance, install in an open space where DT92 can sense the room temperature, and where the signal strength is high. The Room Thermostat can be mounted on a wall or on the optional table stand. Leave at least 30cm distance from any metal objects and at least 1 metre from any other electrical equipment. Select the preferred location



Mounting the Room Thermostat

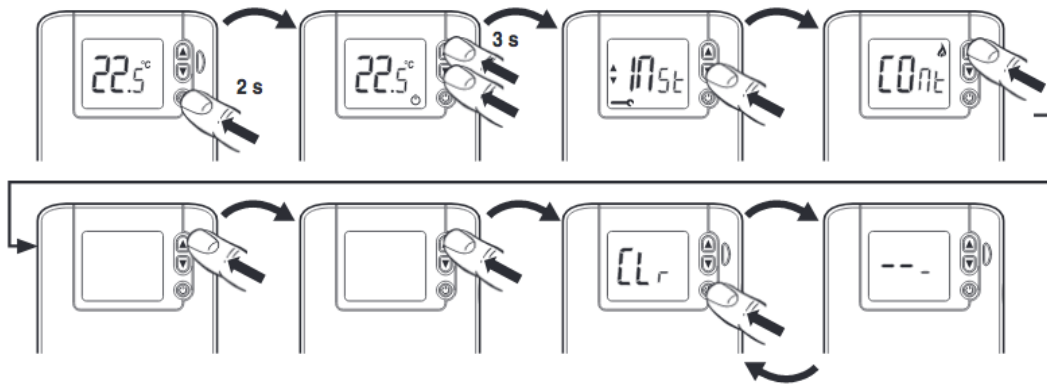


Basic System Operation

Pairing and Clearing the Thermostat

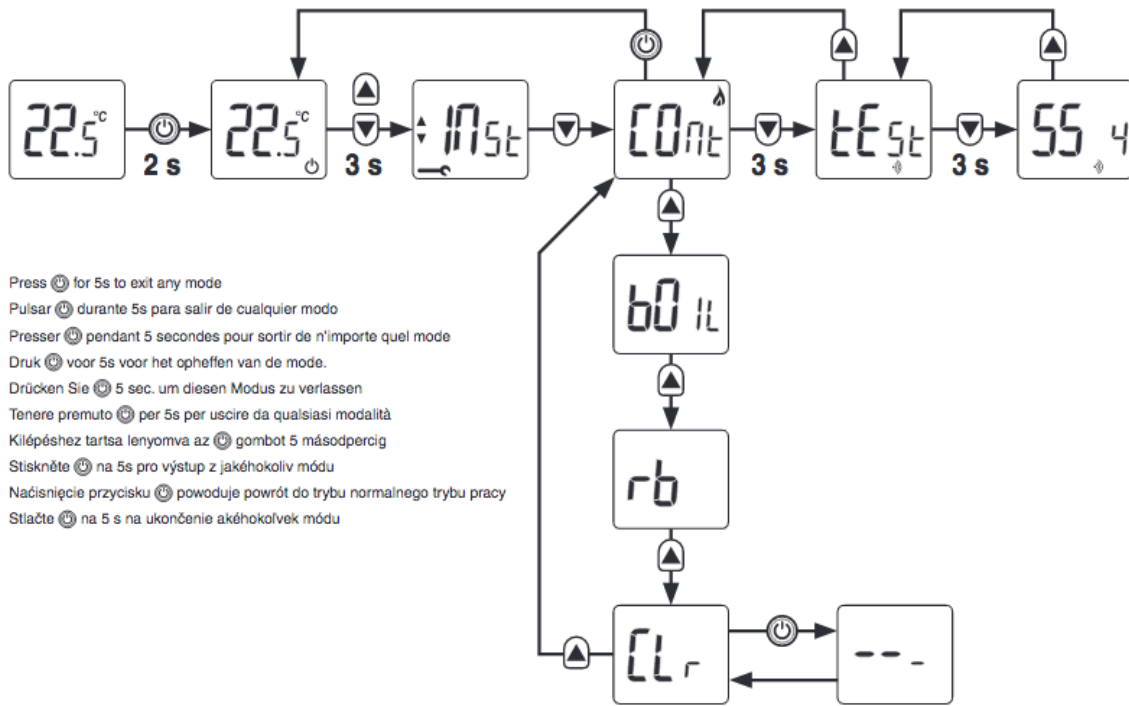
How to Clear the memory :

1. On the Thermostat press and hold the power button for 2 seconds to put the unit into the standby
2. Press the TOP AND DOWN arrow together till you see “Inst” on the screen
3. Now press the down arrow once to go to “C0nt”
4. Press the Up arrow 3 times to get to “Clr” and then press the OFF (power) button.
5. The memory of the Thermostat is now cleared.

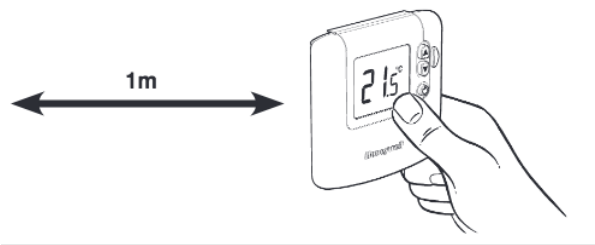


How to pair the Thermostat to the Link Plus :

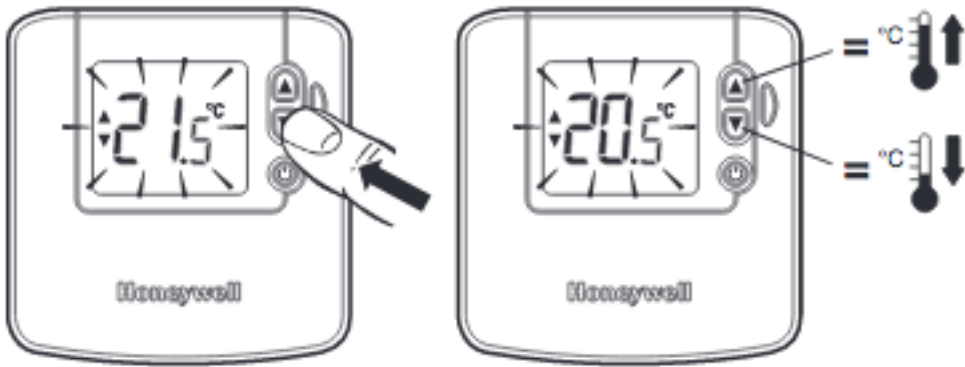
1. Open the Link Plus app, Press the Plus Icon to Add a device, Select “LINK HONEYWELL HOME DEVICE”
2. Give the device a name on the app
3. On the Thermostat press and hold the power button for 2 seconds to put the unit into the standby
4. Press the TOP AND DOWN arrow together till you see “Inst” on the screen (Installer mode).
5. Now press the down arrow once to go to “C0nt”
6. Now press the OFF (power) button on the Wireless Thermostat
7. On the Link Plus app, press the “LINK” Button, the device should pair.



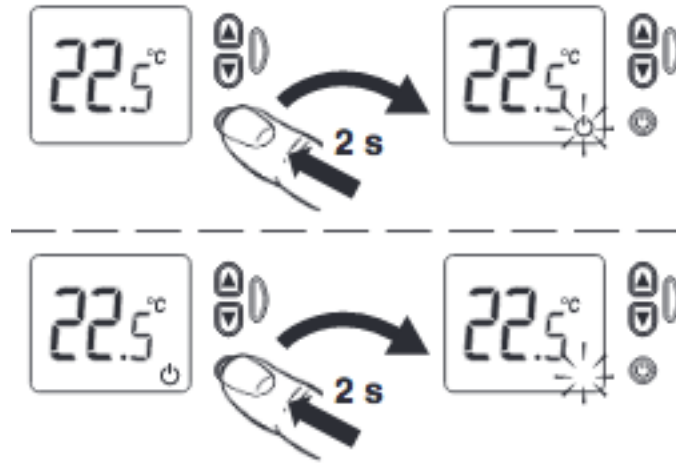
Make sure the unit is around 1 meter Link Plus while trying it to pair it to the app :



Set temperature, adjustment



Switch ON/OFF (frost protection enabled)



Pressing the green ECO button gives a timed period at a different, predefined temperature



DT92 WIRELESS DIGITAL ROOM THERMOSTAT2 09/15 SPECIFICATIONS ELECTRICAL

Room thermostat Power supply : 2 x 1.5V IEC LR6 (AA) Alkaline cells Battery life :

Minimum 2 years (with correctly specified alkaline cells) Battery low warning :

Display indicates when battery power reserve is low. Unit will continue to function for a minimum of 4 weeks after the first indication is given Battery replacement :

Configuration settings stored in NVRAM, so are retained during battery replacement

METRICS Dimensions : 90 x 92 x 27mm (thermostat) : 90 x 92 x 30.5 mm

(relay box : 157 x 115 x 105 mm (pack) Weights : 154g (thermostat with batteries) : 96g

(relay box) : 380g (pack)