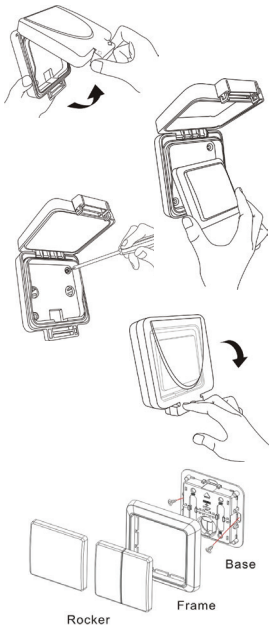


Lightwave^{RF}

LW841 / LW842
Outdoor Switch

Mounting

1. Open the waterproof housing by holding down the plastic tabs, as shown in the diagram, and pulling the cover forward.
2. Remove the switch from the housing by gently inserting a screwdriver into the slot at the bottom of the switch and levering it forward.
3. The housing can be screwed to a suitable surface using the two screw-holes shown in the diagram.
4. Replace the switch by gently aligning it with the housing and pushing back until it clicks.



Changing the battery

1. Follow the previous steps to remove the switch from the housing then gently un-clip the switch frame and rocker switch from the base plate (it is not necessary to remove any screws).
2. Insert the CR2032 Coin Cell battery. Replace the frame and rocker switch and press down until a 'click' sound is heard. Replace the whole switch into the housing as described in the previous section.

Linking to a device

1. Place the LightwaveRF device that you wish to control in 'linking' mode. For information on how to control in 'linking' mode. For information on how to do this please refer to the instruction manual for that specific LightwaveRF device.



2. Whilst the LightwaveRF device is in linking mode, tap the rocker (in either direction) on the Outdoor Switch. The indicator light on the target device will flash to confirm that the switch is now linked. This process can be repeated to control multiple LightwaveRF devices from one switch.

Unlinking

1. Place the LightwaveRF device that you wish to remove in 'linking mode'. For information on how to do this, please refer to the instruction manual for that specific LightwaveRF device.

2. Whilst the LightwaveRF device is in linking mode, tap the rocker (in either direction) on the Outdoor Switch. The LED light on the target device will flash to confirm that the switch and device are unlinked.

Lightwave^{RF}

Innovation Campus Birmingham
Faraday Wharf
Holt Street
Birmingham
B7 4BB

www.lightwaverf.com